

## 4 load cells scale



### FEATURES:

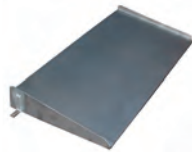
- Platform with 4 load cells.
- It can be used in legal metrology.
- It can be installed on ground or pit.
- Plain sheet in stainless steel 4 mm thick.
- Tubular framework in stainless steel.
- Load cells OIML R-60 C3. In stainless steel, IP67 protection.
- Junction box in ABS, IP66 protection.
- Access to the load cells with no need to raise the platform.
- Adjustable feet in height.
- Stainless steel indicator, model GI400i.
- IP65 protection.
- Backlight LCD display red of 6 digits of 25 mm.
- Holes for wall anchor included.
- Power supply with adaptor 230Vac.
- 2 RS232 output.
- Unique range, multi-range or multi-interval.
- Units: kg.
- Approval type at 6000 divisions OIML class III and IV.
- EC approval.

### FUNCTIONS:

- Weight accumulation: automatic/manual
- Totalization on screen
- Manual tare and pretare
- Back to zero
- Piece counting function
- Checkweigher with LED signal
- Function division 1/10 verification. Display for a few seconds
- Gross/Net



Indicator GI400



Access ramp



Stainless steel in-built frame



Cubicle to pit stainless steel

Code #	Capacity (kg)	Readout (g)	Dimensions (mm)	Packing dimensions (mm)	Packing weight (kg)	Certifications	
						Homologation <b>M</b>	ENAC
260729	1500	500	1200x1200	1220x1220x100	85+2,3	900021	900003
260730	3000	1000	1200x1200	+370x230x125	85+2,3	900022	900004
260731	1500	500	1500x1200	1520x1220x100	110+2,3	900021	900003
260732	3000	1000	1500x1200	+370x230x125	110+2,3	900022	900004
260733	1500	500	1500x1500	1520x1520x100	135+2,3	900021	900003
260734	3000	1000	1500x1500	+370x230x125	135+2,3	900022	900004

### Accessories

Code #	Accessories description
270374	PTB anchorage pan
910045	Stainless steel acces ramp
910046	Stainless steel acces ramp
910041	Stainless steel in-built frame 1200x1200 mm
910042	Stainless steel in-built frame 1500x1200 mm
910043	Stainless steel in-built frame 1500x1500 mm
910026	Stainless steel cubicle to pit 1200x1200 mm
910027	Stainless steel cubicle to pit 1500x1200 mm
910028	Stainless steel cubicle to pit 1500x1500 mm
910133	Stainless steel column (on ground)

\*See optional indicator GI400i